

Technical Specifications

Lighting

- Lamps:** 2 ea. 35 W spot or flood lamps with focused dichroic reflectors
- 35 W Flood:** 1500 cp at 38° beam
- 35 W Spot:** 8500 cp at 10° beam



Camera

- Type:** Color 1/4 in. Super HAD™ CCD
- Resolution:** 450 H. TV Lines
- Zoom:** 18:1 optical x 12:1 digital = 216:1
- Focus:** Automatic & manual with macro capability
- Iris:** Automatic (f1.4 in. to close) & manual
- Shutter:** Automatic & manual (1/1 to 1/10,000 sec)
- Sensitivity:** 0.7 lux
- Construction:** Clear anodized aluminum
- Environment:** Submersible to 9.0 m (30.0 ft.) at 1 bar (15 psi.)
- Temperature:** -18° to 49°C (0° to 120°F)

System Hardware

- 5.5 m (18.0 ft.) telescoping pole, collapses to a length of 1.8 m (6.0 ft.)
- 8.5 m (28.0 ft.) cable integrated inside the pole
- User's manual
- Sunscreen/pouch will hold spare lamps and tooling

Accessories

- Camera stabilizer/holder
- Cable storage
- Longer pole lengths and cable available
- Shipping cases

Control Belt

- Belt-mounted control of zoom and focus
- Belt-mounted control of on/off for each lamp – one lamp at a time to conserve battery power
- Operate from a 95 watt/hour battery belt – rechargeable
- Automatic battery charger (quick mode and continuous mode) (optional)
- Video Output: Composite: S-Video out
Digital viewer connections

Video Display and Storage

- Mini DV format that delivers 3x the color bandwidth of VHS video
- 4 in. LCD screen (12K Pixels) provides excellent viewing clarity
- Memory Stick® (optional) media terminal to capture digital still images at 640 x 480 resolution from videotapes, analog inputs or digital video
- Sony i.LINK® interface for connection to PCs, peripherals and a variety of consumer and professional A/V hardware
- Stereo speakers
- S-Video input and output

■ SONY GV-D1000 Video Walkman®



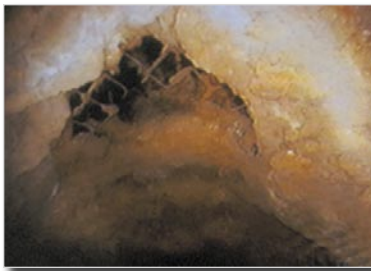
This system includes a rechargeable, belt-mounted battery and controls, with an easy-to-handle telescoping pole 1.8 m (6.0 ft.) to 5.5 m (18.0 ft.).

The Quick View system includes the Sony™ GV-D1000 digital Walkman for playing, recording, and editing up to 80 minutes of video or hundreds of still images on a 4 in. color LCD screen with clear, accurate colors for on-the-spot playback of recordings.

The lightweight and unitized design makes the Quick View the most durable and portable system you will find on the market today.



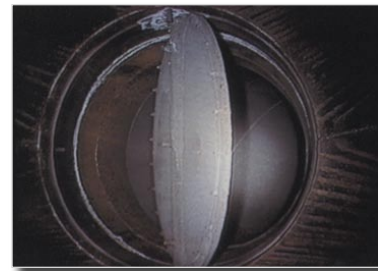
■ Control Belt



■ Lined stack — Break in refractory



■ Vessel — Collapsed catalyst bed



■ Butterfly valve — Operations surveillance



ISO 9001
REGISTERED COMPANY

ABOUT EVEREST VIT

Everest VIT is the industry leader in the development of Remote Visual Inspection (RVI) equipment, sales, on-site service, rentals and training. RVI provides viewing capabilities from a remote location, enabling companies around the world to inspect machinery, facilities and infrastructure in the safest, quickest and most cost-effective manner possible. Everest VIT's innovative products have been used to streamline the inspection process in all industries where safety, security and accuracy are of paramount concern, such as aviation, power generation, processing, manufacturing, law enforcement and infrastructure.

www.everestvit.com

To schedule a product demonstration or to find out more:

Equipment Sales: 888-332-EVIT (3848)

Rentals & Inspection Services: 800-979-24X7 (2497)

Direct: 973-448-0077 • Fax: 973-448-0044 • Locations around the world

