



KE-TECH Kft.

1183 Budapest, Üllői út 470.

Tel.: (1) 290-0151, Fax: (1) 292-2159

E-mail: ketech@ketech.hu, www.ketech.hu

ROVVER® 400

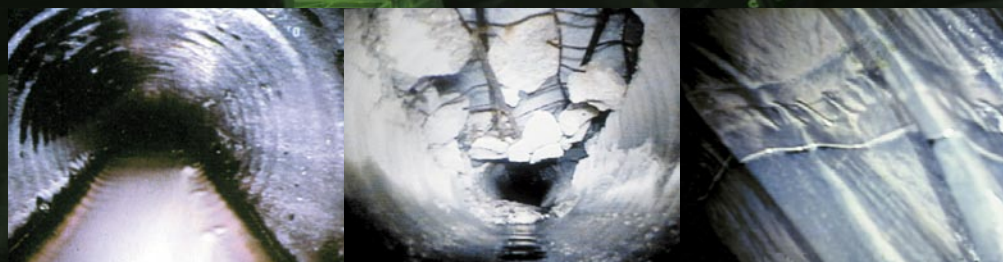
Advanced camera, lighting and transport technology in one rugged inspection unit – the ROVVER 400 Robotic Crawler from Everest VIT®



Crawler with axial camera head and auxiliary lights on top

APPLICATIONS

- Air ducts and electrical conduits
- Lube oil and steam lines
- Steam headers
- Small pressure vessels and tanks
- Loose-parts retrieval



Service Water Line
– Baseline Inspection

Concrete Pipe – Collapse

Lining Evaluation

A compact yet powerful inspection tool, the ROVVER 400 robotic crawler is valued around the world for its rugged versatility. The ROVVER 400 system features a unique modular design and lighting for maximum adaptability. It provides full-directional viewing in a horizontal pipe or line with its pan-and-tilt or forward-viewing video camera. Both cameras have remote adjustable focus for a clear view at all times.

A fast, portable inspection solution for a wide variety of industries.

With such a diverse range of features, the ROVVER 400 is an essential tool for virtually any application—from examining underground piping to maneuvering through debris and steam and process lines, to keeping workers safe during search and rescue missions.

The ROVVER 400 packs enough power to inspect:

- Pipes from 100 to 300 mm (4 to 12 in.) inside diameter (ID)
- Restricted piping
- Large offsets
- Protruding pipe taps
- Pipes with many bends

Distinctive features include:

- Waterproof construction for damp or underwater environments
- Quick disconnect for low maintenance and easy, time-saving operation
- Hand-held pendant for user-controlled lighting, focus, speed and steering
- Color forward and pan-and-tilt camera with remote focus
- Remote viewing up to 200 m (660 ft) from operator
- Lightweight, portable design

The ROVVER 200, ROVVER 600 and ROVVER 900 crawlers are also available for applications requiring various diameters. See our website for more information.



9500-9000 Retrieval Tool Kit

Durable kit that houses a variety of retrieval tools and accessories



COMPLETELY FOCUSED ON REMOTE IMAGING.™

Specifications – ROVVER 400

Crawler

Length: 247 mm (9.7 in.) with axial camera
339 mm (13.4 in.) with pan-and-tilt camera

Width: 94 mm (3.7 in.)

Height: 80 mm (3.2 in.)

Weight: 4.5 kg (9.9 lbs.)

Material: Nickel plated brass, stainless steel, aluminum

Drive: 2 x 20 W DC motor, 6-wheel drive, steerable, speed controls

Depth Rating: 1 bar (14.7 psi)—Equivalent to water depth of 10 m (33 ft.)

Wheel Sets: Ø 64 mm (2.5 in.) wheels (6) for 100.0 mm or 4 in. pipe
Ø 86 mm (3.4 in.) wheels (4) for 150.0 mm or 6 in. pipe
Ø 86 mm (3.4 in.) extended wheels (4) for 175 mm or 8 in. pipe

Rating: IP68

Camera

Type: 1/2 in. color CCD camera

Resolution: 380,000 pixels, 360 HTV lines of resolution

Lens: 4 mm, f1.2, remote focus

Lens FOV: 68° x 90° x 100° (V x H x D)

Focus: 6 mm (0.25 in.) to infinity (remotely adjustable)

Dimensions: Axial - Ø 48 mm (1.9 in.) x 78 mm (3.1 in.)
Pan (175°)-and-tilt (135°) – Ø 88 mm (3.5 in.) x 192 mm (7.6 in.)

Rating: IP68

Control Unit

Size: 420 mm (16.5 in.) D x 343 mm (13.5 in.) W x 292 mm (11.5 in.) H

Pendant Control: Left/right steering, crawler speed, light intensity, modular slide-in cards for upgrades/accessories

Power: 110/230 VAC, 50/60 Hz CE

Output: NTSC composite (EIA-170A) video (PAL available)
19 inch rack mounted controller is available

Weight: 18.2 kg (40.5 lbs.)

Lights

Camera: 10 W, 16 x 0.6 W, halogen

Tractor: 40 W, 2 x 20 W, halogen

Auxiliary: 40 W, 2 x 20 W, dichroic reflector

Maximum: 90 W

Cable Drum

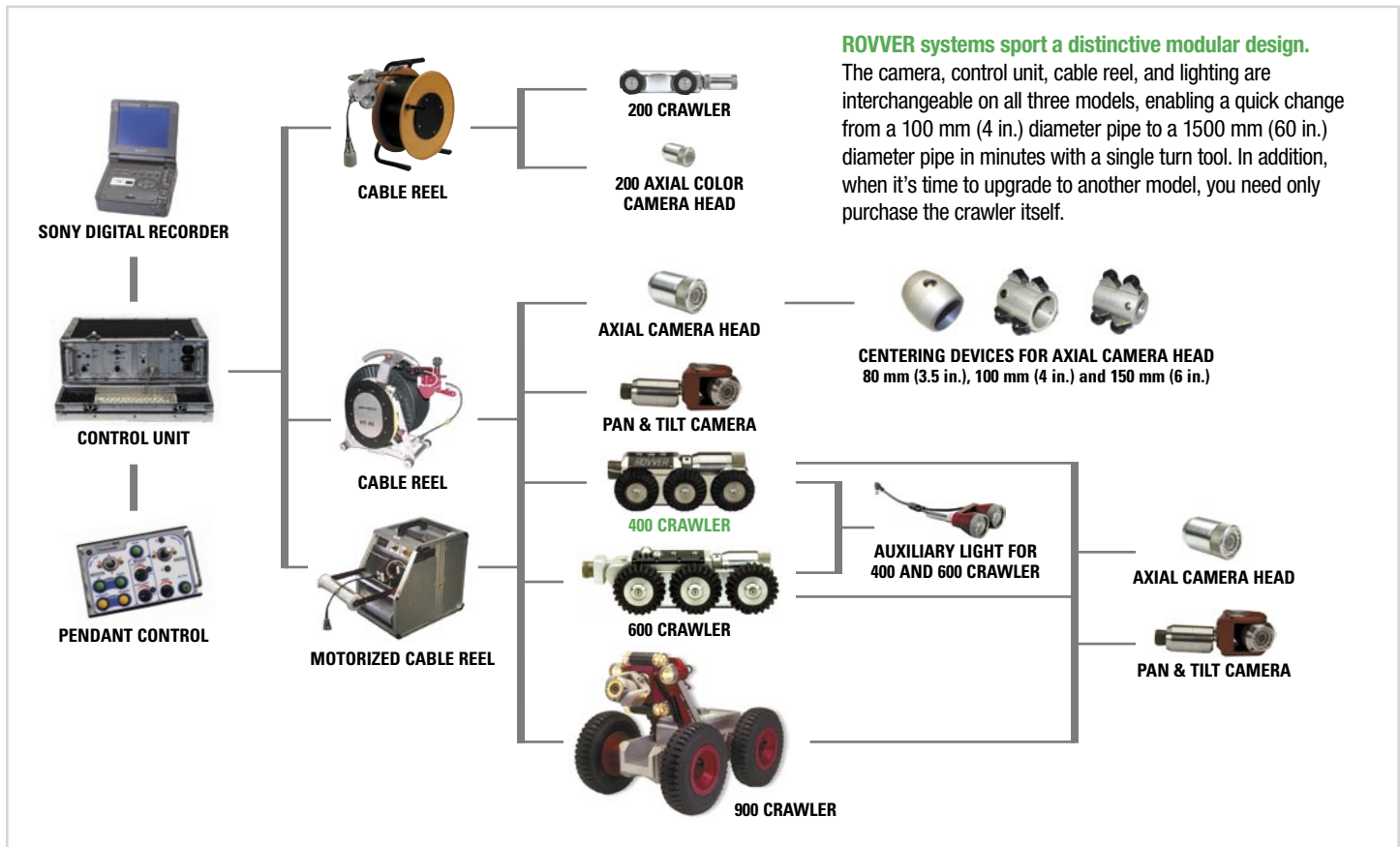
Cable: 7 mm (0.28 in.) diameter
Multi-conductor with 227 kg (500 lbs.) Kevlar® strength member and polyethylene outer jacket

Length: Available up to 200 m (660 ft.)

Drum: Slip-ring cable drum with various cable length
Optional – automatic motorized cable reel with level wind feature

Weight: Approximately 23 kg (50 lbs.) – model, cable length dependant

Rating: IP64



ABOUT EVEREST VIT

Everest VIT is the industry leader in the development of Remote Visual Inspection (RVI) equipment, sales, on-site service, rentals and training. RVI provides viewing capabilities from a remote location, enabling companies around the world to inspect machinery, facilities and infrastructure in the safest, quickest and most cost-effective manner possible. Everest VIT's innovative products have been used to streamline the inspection process in all industries where safety, security and accuracy are of paramount concern, such as aviation, power generation, processing, manufacturing, law enforcement and infrastructure.

www.everestvit.com

To schedule a product demonstration or to find out more:

Equipment Sales: 888-332-EVIT (3848)

Rentals & Inspection Services: 800-979-24X7 (2497)

Direct: 973-448-0077 • Fax: 973-448-0044 • Locations around the world

